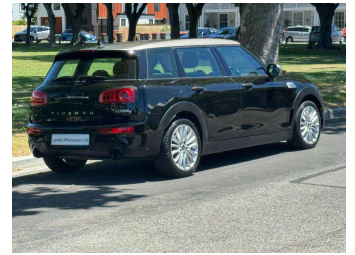


# 2015 Mini Cooper S Clubman 2.0T 6AT 5-Door




**Purchase Price** **\$18,990**  
Includes GST, Registration & Licensing

Finance may be available on this vehicle. Ask one of our friendly staff for more information.



Gain peace of mind with Mechanical Breakdown Insurance. **Ask us how.**



**Top features**

- » Cruise Control
- » Reversing Camera

Body Style  
**5 door, Station Wagon**

Odometer  
**72,000 km**

Engine  
**2000 cc**

Fuel Type  
**Petrol**

Transmission  
**Automatic**

Wheels  
-

VIN  
**WMWLN720702D34048**

Interior  
-

Safety



Based on 2024 VSRR rating

Reg No.

-

Ext Colour  
**Midnight Black Metallic**

History

-

Seats

-

CO2 Emissions  
**★★★★☆**  
**160 grams/km**

Energy Economy  
**★★★☆☆**

**Annual fuel cost of \$2,670**  
**6.8L per 100km**

Cost per year is an estimate based on petrol price of \$2.80 per litre and an average distance of 14000 km. Emissions and Energy Economy figures standardised to 3P WLTP.

**Stock ID: 2565**



Lambo Wholesale | Phone 027 548 4245 | Email [lambowholesale@xtra.co.nz](mailto:lambowholesale@xtra.co.nz)  
173 Ferry Road, Waltham, Christchurch 8011, New Zealand  
[www.lambowholesale.co.nz](http://www.lambowholesale.co.nz)

