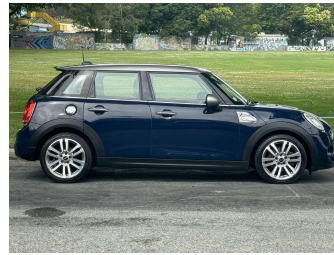


# 2016 Mini Cooper S 2.0T 6AT 5-Door SEVEN




**Purchase Price** **\$18,990**  
Includes GST, Registration & Licensing

Finance may be available on this vehicle. Ask one of our friendly staff for more information.



Gain peace of mind with Mechanical Breakdown Insurance. **Ask us how.**



**Top features**

None Listed

Body Style  
**5 door, Hatchback**

Odometer  
**66,900 km**

Engine  
**2000 cc**

Fuel Type  
**Petrol**

Transmission  
**AT**

Wheels  
-

VIN  
**WMWXS720202E45049**

Interior  
-

Safety  
-

Reg No.

-

Ext Colour  
**Lapisluxury Blue**

History

-

Seats

-

CO2 Emissions

-



Energy Economy

-

**Stock ID: 2326**



Lambo Wholesale | Phone 027 548 4245 | Email [lambowholesale@xtra.co.nz](mailto:lambowholesale@xtra.co.nz)  
173 Ferry Road, Waltham, Christchurch 8011, New Zealand  
[www.lambowholesale.co.nz](http://www.lambowholesale.co.nz)



4.84 | 766 reviews